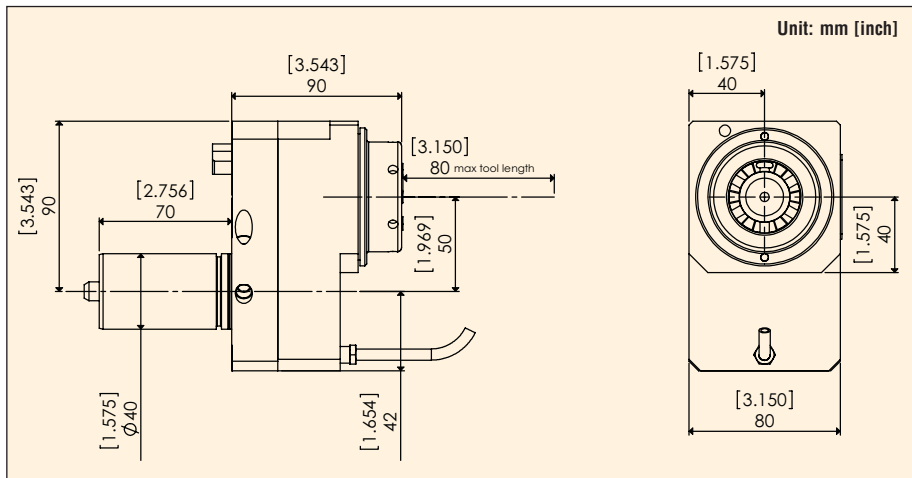
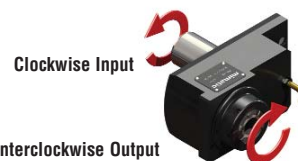


# Offset Type (for sub spindle)

Part #: MZQT47-ER32X-OFS

Mimatic Part # (old): 05.0711.7341.505  
Mimatic Part # (new): 124375



Collet Size	Clamping Range	Max. Torque	Input/Output RPM (Max.)	Gear Ratio	Input/Output Rotation	Coolant	Spindle Wrench	Nut Wrench
ER32	1-20mm	50 Nm	6500/6500	1:1	CW-CCW	External	107642	112900

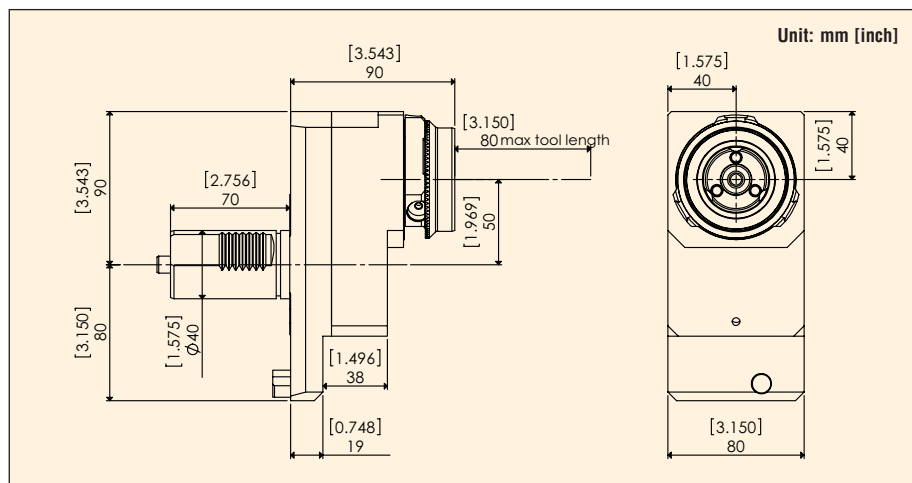
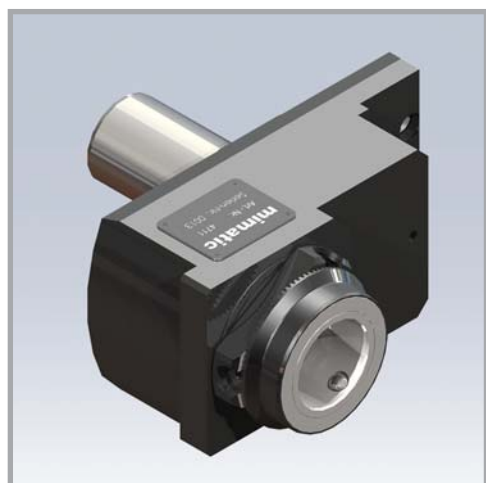
Please refer to pages 44 - 47 for ER Series Collets and ER Tap Collets details.

QTN200/250 & SQT15/18

# Offset Type

Part #: MZQT47-MI50X-OFF

Mimatic Part # (new): 124025



Collet Size	Clamping Range	Max. Torque	Input/Output RPM (Max.)	Gear Ratio	Input/Output Rotation	Coolant	Spindle Wrench	Nut Wrench
MI50	-	50 Nm	6500/6500	1:1	CW-CCW	External	170419	173985

Please refer to pages 44 - 47 for ER Series Collets and ER Tap Collets details.